

Optical Time Domain Reflectometer

Model # LOT2100



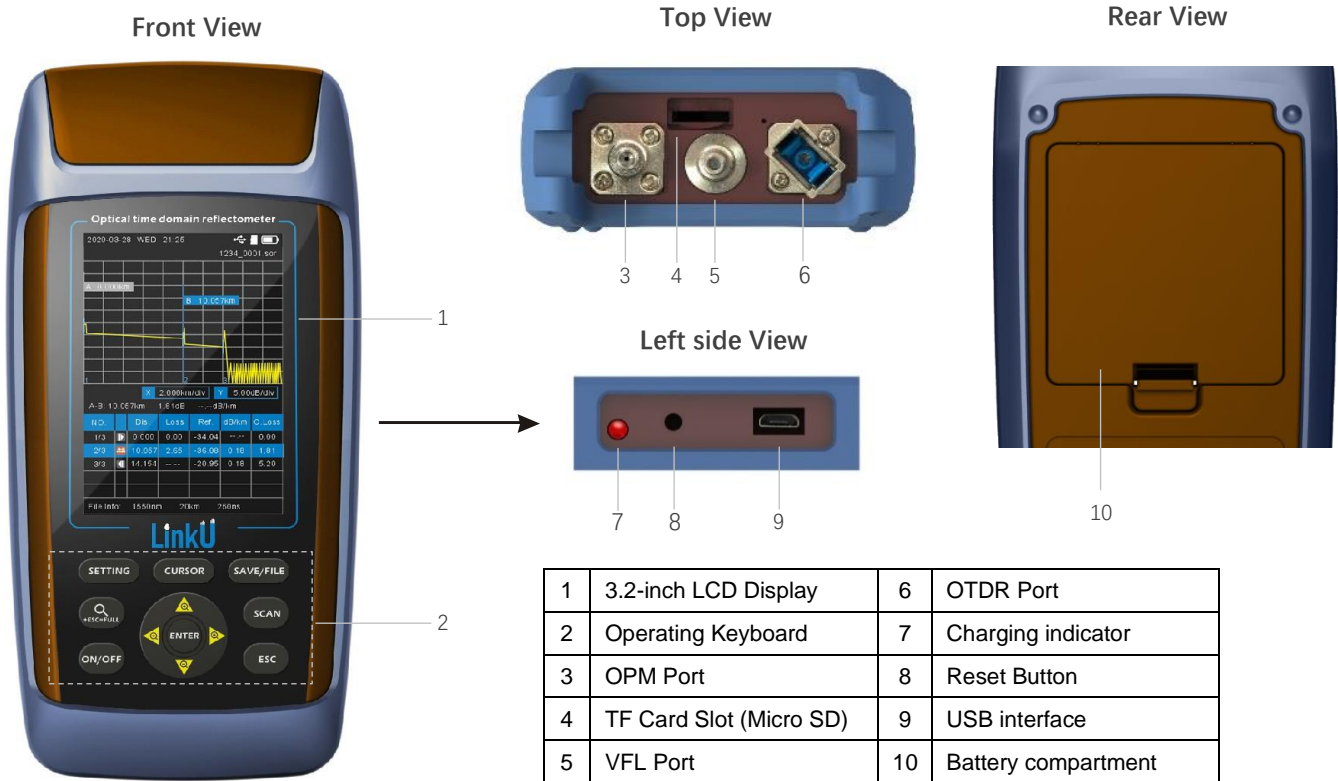
WARNING

- Do not look at the laser's direct ray, reflected ray from a mirror, or indirect ray without the proper protective eyewear. In addition, avoid being exposed to the laser light. It can cause blindness or damage to the eye.
- Do not use the thermocouple in a location where any flammable or explosive gas/vapor is present. Operation in such an environment constitutes a safety hazard.
- Use the Correct Power Supply and AC Adapter.
- Use only the battery pack specified for the instrument.
When not in use for a long time, please take out the battery from the instrument to avoid the damage caused by battery leakage.
- Do not use the device in one hour after moving the device from the cold area to the hot area, to avoid condensation phenomenon.

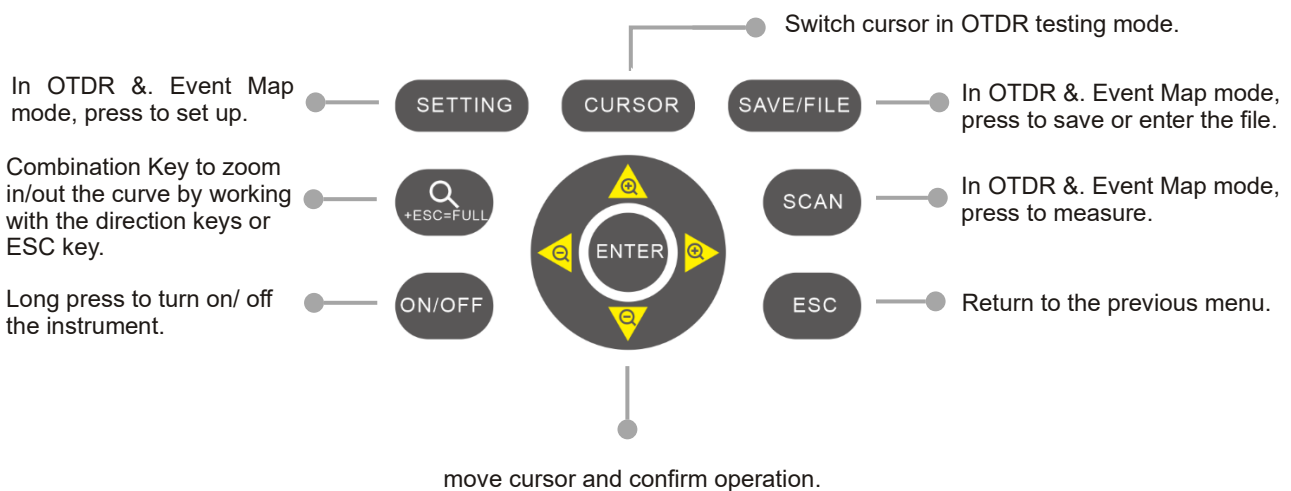
※ The contents of this manual are subject to change without prior notice as a result of continuing improvements to the instrument's performance and functions.



Overall Layout



Key-board

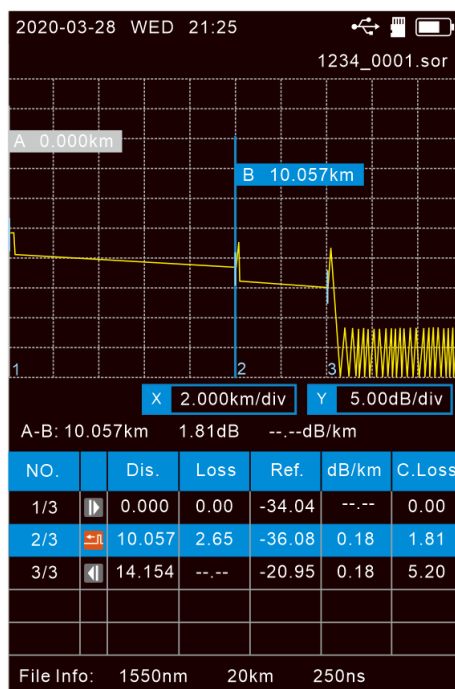


Main Menu

There are five sub-menus, use the Direction/Enter to select and enter the chosen menu. The menu will be Highlighted when it is chosen.



OTDR Mode



- File name
- Testing Curve
- Scale
- Distance & attenuation
- Event list
- Measurement warning
- Measurement info

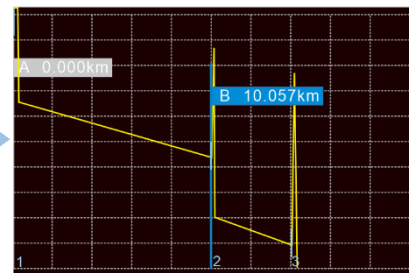
OTDR ----- Curve Zoom In/Out



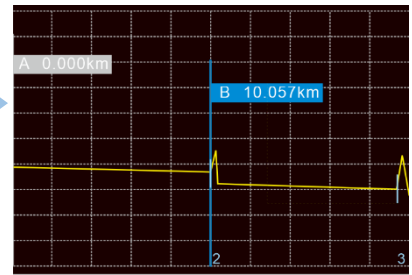
- + Vertical Zoom In
- + Vertical Zoom Out
- + Horizontal Zoom In
- + Horizontal Zoom Out
- + Full-screen Display



Vertical scaling

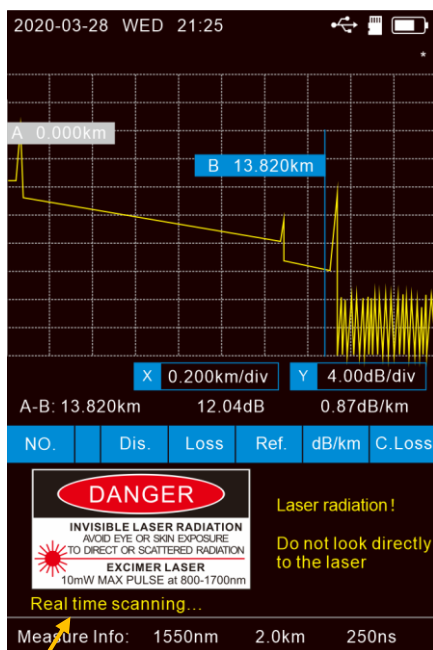


Horizontal scaling

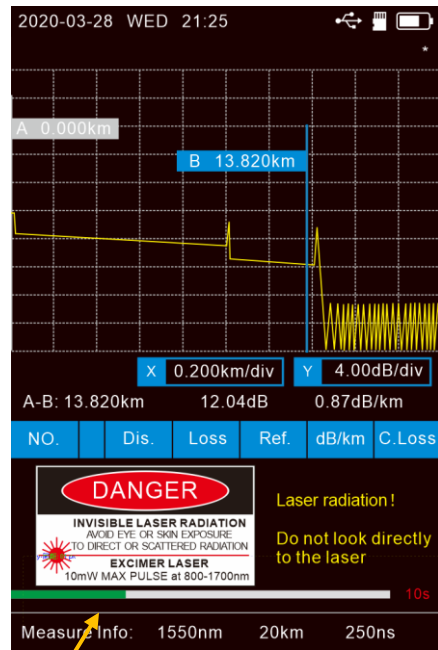


OTDR ----- Measurement

Press to run measurement. If the Real time mode is activated, press again to run average measurement, a progress bar will be displayed.





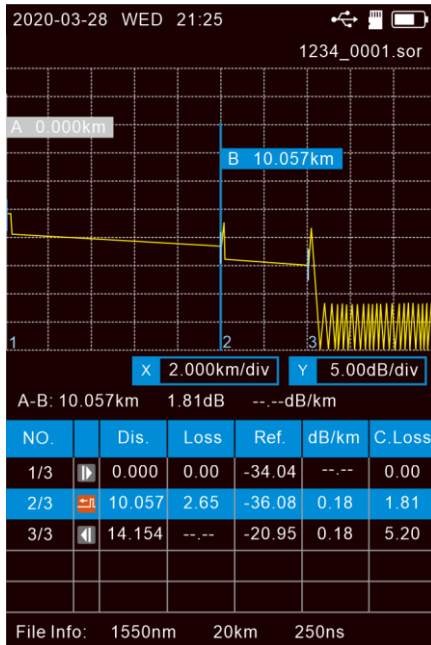
Real time mode








Average measurement

OTDR ----- Event List





After the measurement finished, the event list will be displayed. If there are more than 5 events, the rest can be viewed by using  or  button.

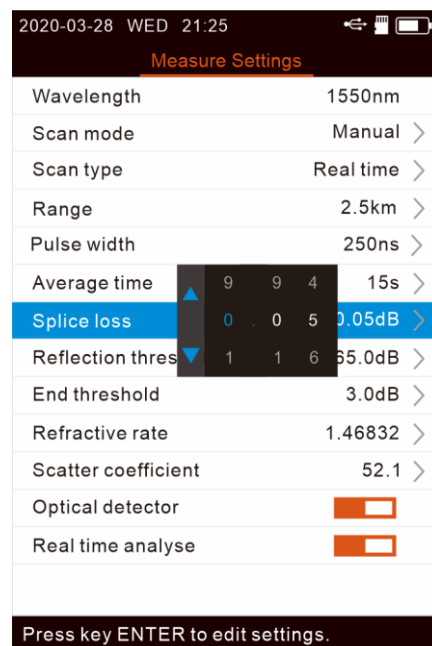
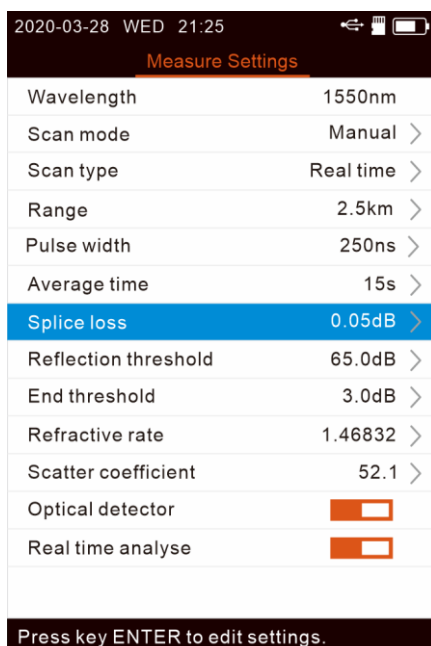


Five event types

-  Optic fiber starting point
-  Reflection event
-  Attenuation event
-  Gain event
-  Optic fiber ending point

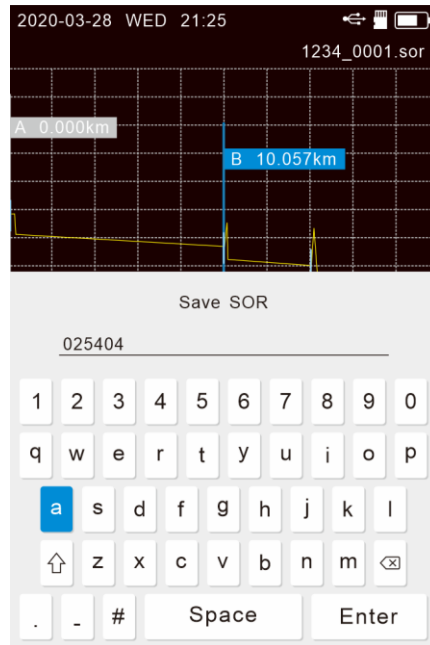
OTDR ----- Setup

Press the **SETTING** to enter the OTDR setup menu, select item by using  & , then press **ENTER** and use  &  to change the setting, press **ESC** to quit current setting.



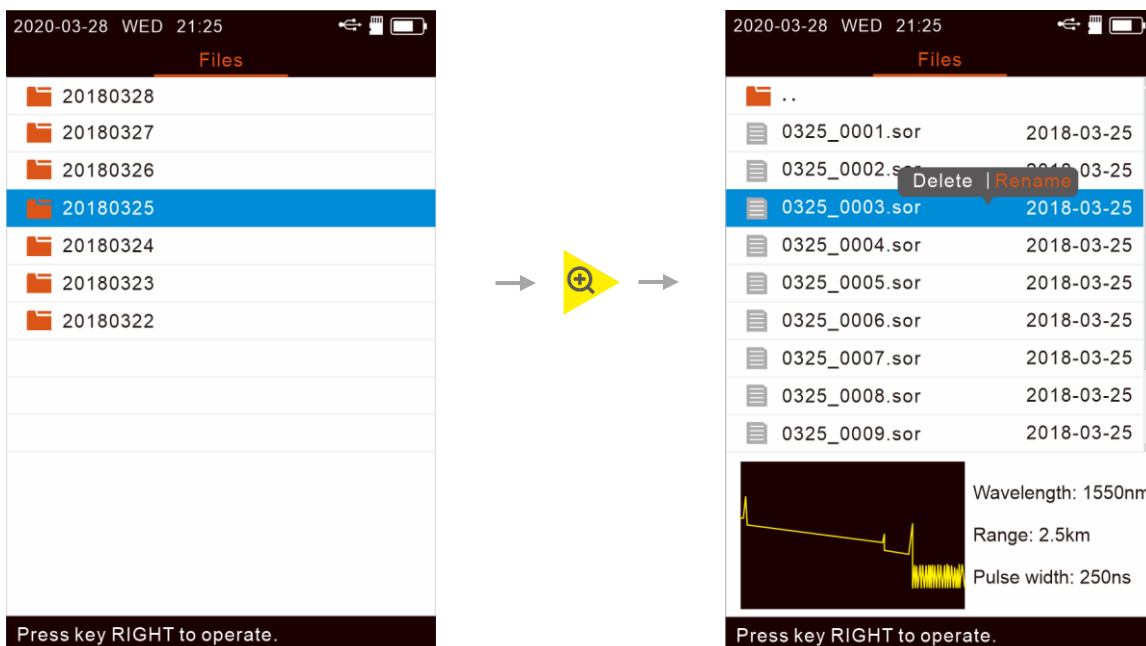
OTDR ----- File Saving

After finishing the measurement, press **SAVE/FILE** button to save the file and edit the file name by using the virtual keyboard in the screen. If the Auto Name function is turned on, the file name will be automatically generated when saving.



OTDR ----- File Review

Press the **SAVE/FILE** button to enter the file list. Select file by using & and press to review the file, or press the to delete/rename the file.



Event Map

Select Event Map mode in the main menu, and press **ENTER** to enter, then press **SCAN** to run measurement, a progress bar will be displayed.

The Event Map interface displays a linear view of event list and a table of measurement data. The table below shows the data from the screenshot:

No.	Type	Dis.	Loss	Ref.
1/5		0.0000	0.000	-49.564
2/5		0.0102	2.235	-53.680
3/5		0.0204	2.345	-62.950
4/5		0.0306	2.099	-62.012
5/5		0.0409	---	-35.194

Annotations in the image point to the following elements:

- Total loss
- Visual event range
- Linear view of event list
- Event list (Measurement warning)

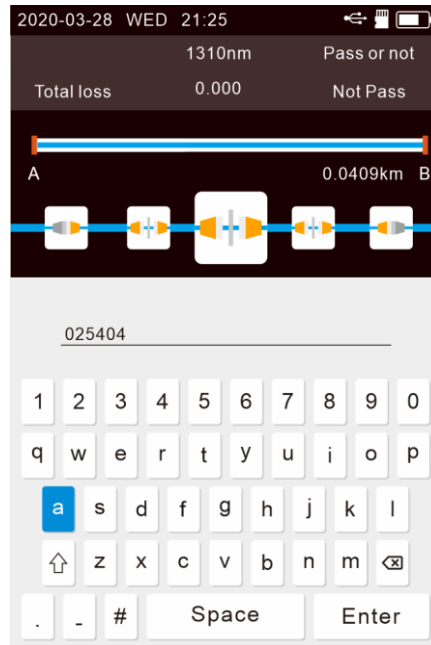
Event Map ----- Setup

Press **SETTING** in the Event Map interface to enter the parameter setting interface, and press the **ENTER** to pop up the setting box, Multi-digit setting frame, after positioning the cursor with the left and right buttons, select up and down.

The Settings interface shows various parameters. The left screenshot shows the 'Reflection threshold' set to 0.7500dB. Pressing **ENTER** leads to the right screenshot, where a multi-digit setting frame is displayed for the 'Reflection threshold' parameter, allowing for precise adjustments.

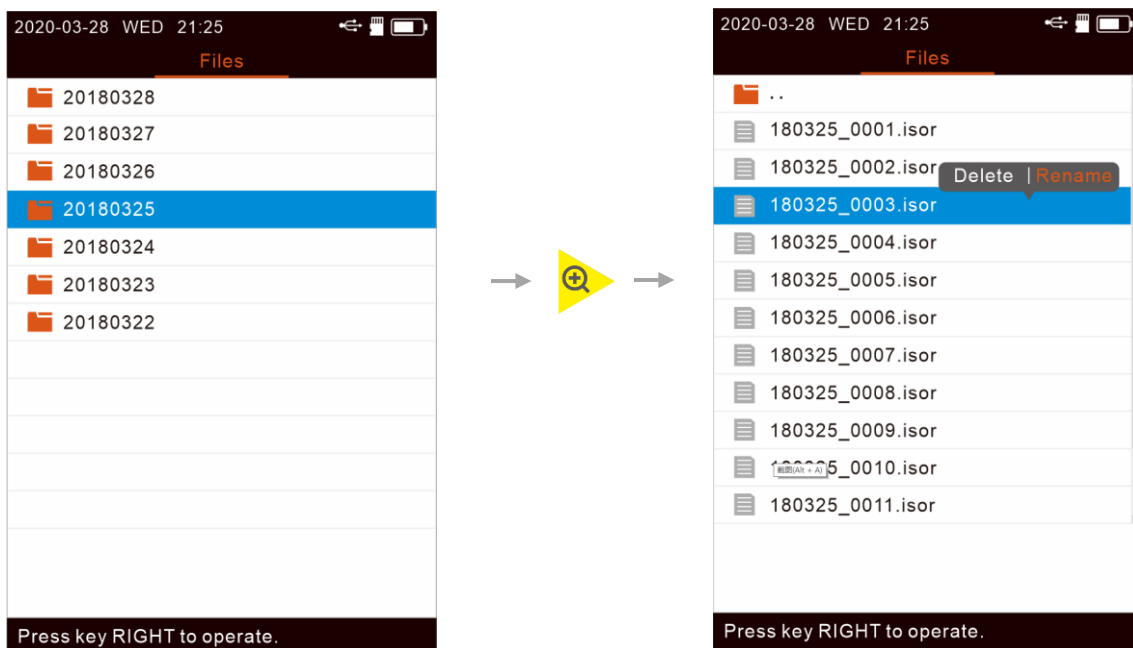
Event Map ----- File Saving

After finishing the measurement, press **SAVE/FILE** to save the file and edit the file name by using the virtual keyboard in the screen. If the Auto Name function is turned on, the file name will be automatically generated when saving.



Event Map ----- File Review

Press the **SAVE/FILE** button to enter the file list. Select file by using & and press **ENTER** to review the file, or press the to delete/rename the file.



OPM/VFL Mode

Select OPM/VFL in the main menu, and press **ENTER** to enter the OPM/VFL mode. Press **+** to turn on/off the VFL. Press **-** to set ref. figure. Press **+** to review current ref. figure. Press **-** to switch the testing wavelengths*. Press **SETTING** to enter OPM setup.

* If "Auto λ" is activated, the wavelength cannot be switched by pressing **-** key.

The OPM/VFL mode interface consists of a main display and a settings menu. The main display shows the current wavelength (1550nm), power level (-70.00 dBm), and noise level (0.10 nw). It also features a laser safety warning and a control panel with four directional buttons: 'View REF' (up), 'Switching wavelength' (left), 'VFL on or off' (right), and 'REF setting' (down). The settings menu, accessed via the 'SETTING' button, allows toggling 'Auto λ' and 'Freq.ID'.

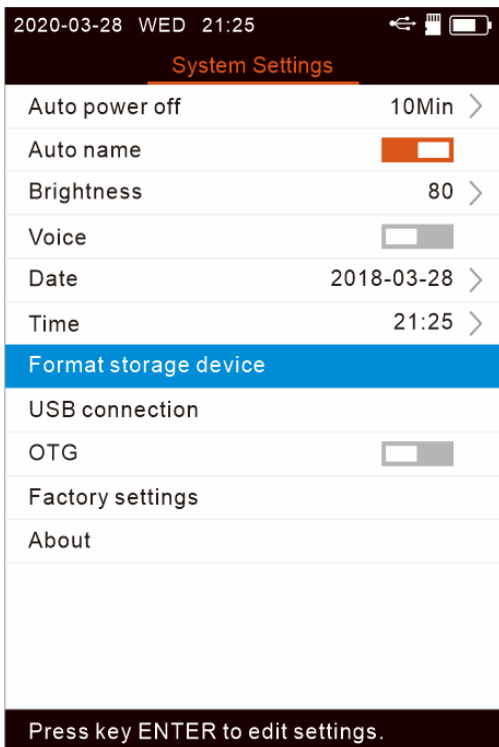
OLS Mode

Select OLS in the main menu, and press **ENTER** to enter the OLS mode. Press **+** to turn on/off the OLS. Press **-** to switch the wavelength between 1310 & 1550nm. Press **+** to switch CW/270Hz/1KHz/2KHz.

The OLS mode interface shows the current wavelength (1310nm) and modulation frequency (1kHz). It includes a laser safety warning and a control panel with three directional buttons: 'ON/OFF' (up), 'Switching wavelength' (left), and 'Change modulation' (right). The right screenshot shows the 'OLS' indicator on the device diagram being activated after pressing the '+' button.

System

Select “setting” in the main menu, and press ENTER to enter the system setup mode.



- Set or cancel auto power off function.
- Name automatically when file is saving, can cancel this function.
- Adjust the brightness of LCD.
- Turn on/off the key beep.
- Set year, month, day.
- Set hour, minute.
- Delete all files in the current TF card.
- Connect the OTDR to PC via USB cable to view files in TF card or internal storage.
- Connect USB status settings to view TF card files or not.
- Reset to default settings, and has no effect on the set time and stored data.
- View the device hardware/software version number, CPU number and Language.





Shanghai LinkU Telecom Tech Co.,Ltd

☎ +86-21-5787 7996

✉ info@linkutel.com

📍 Room 401, Building 3, No.655 Jiujing Road,
Songjiang District, Shanghai,China